



Compare Assessments By Roll

Assessment for Entire Municipality

Roll	Land				Improvement				Total				Grand Total			
	2017	2018	% Diff	\$ Diff	2017	2018	% Diff	\$ Diff	2017	2018	% Diff	\$ Diff	2017	2018	% Diff	\$ Diff
1010	13,010	13,010			154,630	157,930	2.1%	3,300	0	0			167,640	170,940	2.0%	3,300
1020	11,920	11,920			64,830	64,530	-0.5%	-300	0	0			76,750	76,450	-0.4%	-300
1021	33,020	33,020			64,390	64,590	0.3%	200	0	0			97,410	97,610	0.2%	200
1030	63,610	63,610			3,404,450	3,436,000	0.9%	31,550	0	0			3,468,060	3,499,610	0.9%	31,550
1070	16,180	16,180			123,750	126,210	2.0%	2,460	0	0			139,930	142,390	1.8%	2,460
1071	16,180	16,180			0	0			0	0			16,180	16,180		
1080	25,600	25,600			191,710	196,000	2.2%	4,290	0	0			217,310	221,600	2.0%	4,290
1101	25,600	25,600			342,730	347,020	1.3%	4,290	0	0			368,330	372,620	1.2%	4,290
1110	43,000	43,000			5,540	25,170	354.3%	19,630	0	0			48,540	68,170	40.4%	19,630
1130	25,600	25,600			147,250	151,010	2.6%	3,760	0	0			172,850	176,610	2.2%	3,760
1140	25,600	25,600			89,870	89,920	0.1%	50	0	0			115,470	115,520		50
1160	43,000	43,000			63,610	63,430	-0.3%	-180	0	0			106,610	106,430	-0.2%	-180
1170	25,600	25,600			0	0			0	0			25,600	25,600		
1180	25,600	25,600			70,490	72,230	2.5%	1,740	0	0			96,090	97,830	1.8%	1,740
1200	25,600	25,600			0	0			0	0			25,600	25,600		
1210	16,180	16,180			0	0			0	0			16,180	16,180		
1211	16,180	16,180			0	0			0	0			16,180	16,180		
1220	16,180	16,180			0	0			0	0			16,180	16,180		
1221	16,180	16,180			0	0			0	0			16,180	16,180		
1230	25,600	25,600			360,020	368,560	2.4%	8,540	0	0			385,620	394,160	2.2%	8,540
1240	25,600	25,600			294,790	300,240	1.8%	5,450	0	0			320,390	325,840	1.7%	5,450
1250	25,600	25,600			0	0			0	0			25,600	25,600		
1260	25,600	25,600			218,210	221,700	1.6%	3,490	0	0			243,810	247,300	1.4%	3,490
1270	25,600	25,600			0	0			0	0			25,600	25,600		
1280	25,600	25,600			181,000	183,600	1.4%	2,600	0	0			206,600	209,200	1.3%	2,600
1300	25,600	25,600			238,290	241,410	1.3%	3,120	0	0			263,890	267,010	1.2%	3,120
1310	25,600	25,600			93,690	96,000	2.5%	2,310	0	0			119,290	121,600	1.9%	2,310
1320	25,600	25,600			0	0			0	0			25,600	25,600		
1330	25,600	25,600			154,240	155,770	1.0%	1,530	0	0			179,840	181,370	0.9%	1,530
1340	16,100	16,100			59,490	60,960	2.5%	1,470	0	0			75,590	77,060	1.9%	1,470
1341	16,100	16,100			0	0			0	0			16,100	16,100		
1350	25,600	25,600			56,900	56,980	0.1%	80	0	0			82,500	82,580	0.1%	80
1360	25,600	25,600			0	0			0	0			25,600	25,600		
1370	25,600	25,600			205,720	207,880	1.0%	2,160	0	0			231,320	233,480	0.9%	2,160
1380	25,600	25,600			0	0			0	0			25,600	25,600		
1400	25,600	25,600			247,910	257,920	4.0%	10,010	0	0			273,510	283,520	3.7%	10,010
1410	25,850	25,850			119,270	120,170	0.8%	900	0	0			145,120	146,020	0.6%	900
1411	25,600	25,600			201,340	206,300	2.5%	4,960	0	0			226,940	231,900	2.2%	4,960
1430	34,430	34,430			0	0			0	0			34,430	34,430		
1440	16,180	16,180			117,270	117,720	0.4%	450	0	0			133,450	133,900	0.3%	450
1450	25,600	25,600			0	0			0	0			25,600	25,600		



Compare Assessments By Roll

Assessment for Entire Municipality

Roll	Land				Improvement				Total				Grand Total			
	2017	2018	% Diff	\$ Diff	2017	2018	% Diff	\$ Diff	2017	2018	% Diff	\$ Diff	2017	2018	% Diff	\$ Diff
1451	25,600	25,600			56,050	56,080	0.1%	30	0	0			81,650	81,680		30
1460	25,600	25,600			122,850	124,010	0.9%	1,160	0	0			148,450	149,610	0.8%	1,160
1470	25,600	25,600			0	0			0	0			25,600	25,600		
1500	25,600	25,600			192,680	195,790	1.6%	3,110	0	0			218,280	221,390	1.4%	3,110
1510	63,680	63,680			0	0			0	0			63,680	63,680		
1550	63,680	63,680			1,172,560	1,157,270	-1.3%	-15,290	0	0			1,236,240	1,220,950	-1.2%	-15,290
1600	25,600	25,600			0	0			0	0			25,600	25,600		
1610	25,600	25,600			0	53,320		53,320	0	0			25,600	78,920	208.3%	53,320
1620	25,600	25,600			168,750	170,340	0.9%	1,590	0	0			194,350	195,940	0.8%	1,590
1630	25,600	25,600			0	0			0	0			25,600	25,600		
1640	25,600	25,600			136,740	138,010	0.9%	1,270	0	0			162,340	163,610	0.8%	1,270
1650	25,600	25,600			113,470	113,790	0.3%	320	0	0			139,070	139,390	0.2%	320
1660	25,600	25,600			3,310	3,390	2.4%	80	0	0			28,910	28,990	0.3%	80
1670	25,600	25,600			0	0			0	0			25,600	25,600		
1680	25,600	25,600			0	0			0	0			25,600	25,600		
1700	31,780	31,780			0	0			0	0			31,780	31,780		
1710	25,600	25,600			0	0			0	0			25,600	25,600		
1720	25,600	25,600			24,500	24,840	1.4%	340	0	0			50,100	50,440	0.7%	340
1730	25,600	25,600			136,320	137,480	0.9%	1,160	0	0			161,920	163,080	0.7%	1,160
1740	21,710	21,710			281,660	284,210	0.9%	2,550	0	0			303,370	305,920	0.8%	2,550
1741	10,310	10,310			95,870	96,300	0.4%	430	0	0			106,180	106,610	0.4%	430
1750	32,250	32,250			0	0			0	0			32,250	32,250		
1770	32,250	32,250			0	0			0	0			32,250	32,250		
1800	19,180	19,180			110,780	110,920	0.1%	140	0	0			129,960	130,100	0.1%	140
2010	33,900	33,900			0	0			0	0			33,900	33,900		
2021	12,090	12,090			367,610	380,070	3.4%	12,460	0	0			379,700	392,160	3.3%	12,460
2030	13,930	13,930			0	0			0	0			13,930	13,930		
2040	32,660	32,660			117,120	117,070		-50	0	0			149,780	149,730		-50
2050	25,600	25,600			100,540	100,730	0.2%	190	0	0			126,140	126,330	0.2%	190
2060	25,600	25,600			49,710	50,380	1.3%	670	0	0			75,310	75,980	0.9%	670
2070	25,600	25,600			0	0			0	0			25,600	25,600		
2080	25,600	25,600			74,170	74,440	0.4%	270	0	0			99,770	100,040	0.3%	270
2100	25,600	25,600			370,550	374,720	1.1%	4,170	0	0			396,150	400,320	1.1%	4,170
2101	25,780	25,780			33,650	34,930	3.8%	1,280	0	0			59,430	60,710	2.2%	1,280
2112	2,830	2,830			22,410	46,850	109.1%	24,440	0	0			25,240	49,680	96.8%	24,440
2140	15,200	15,200			210,240	215,090	2.3%	4,850	0	0			225,440	230,290	2.2%	4,850
2150	11,500	11,500			17,000	17,730	4.3%	730	0	0			28,500	29,230	2.6%	730
2151	10,050	10,050			0	0			0	0			10,050	10,050		
2160	10,940	10,940			0	0			0	0			10,940	10,940		
2161	10,640	10,640			25,410	26,550	4.5%	1,140	0	0			36,050	37,190	3.2%	1,140
2170	10,980	10,980			76,230	79,470	4.3%	3,240	0	0			87,210	90,450	3.7%	3,240



Compare Assessments By Roll

Assessment for Entire Municipality

Roll	Land				Improvement				Total				Grand Total			
	2017	2018	% Diff	\$ Diff	2017	2018	% Diff	\$ Diff	2017	2018	% Diff	\$ Diff	2017	2018	% Diff	\$ Diff
2171	14,660	14,660			0	0			0	0			14,660	14,660		
2180	11,730	11,730			0	0			0	0			11,730	11,730		
2190	11,280	11,280			52,580	55,160	4.9%	2,580	0	0			63,860	66,440	4.0%	2,580
2200	25,600	25,600			0	0			0	0			25,600	25,600		
2210	11,020	11,020			110,680	111,470	0.7%	790	0	0			121,700	122,490	0.6%	790
2220	14,910	14,910			77,360	77,400	0.1%	40	0	0			92,270	92,310		40
2221	31,430	31,430			0	0			0	0			31,430	31,430		
2230	31,430	31,430			212,250	213,750	0.7%	1,500	0	0			243,680	245,180	0.6%	1,500
2231	890	890			0	0			0	0			890	890		
2240	11,020	11,020			20,720	20,990	1.3%	270	0	0			31,740	32,010	0.9%	270
2300	25,600	25,600			0	0			0	0			25,600	25,600		
2310	25,600	25,600			120,490	120,780	0.2%	290	0	0			146,090	146,380	0.2%	290
2321	25,600	25,600			132,890	133,960	0.8%	1,070	0	0			158,490	159,560	0.7%	1,070
2330	43,000	43,000			0	0			0	0			43,000	43,000		
2350	25,600	25,600			6,510	6,500	-0.2%	-10	0	0			32,110	32,100		-10
2360	34,250	34,250			61,270	61,250		-20	0	0			95,520	95,500		-20
2370	16,180	16,180			57,780	58,000	0.4%	220	0	0			73,960	74,180	0.3%	220
2380	25,600	25,600			62,930	63,060	0.2%	130	0	0			88,530	88,660	0.1%	130
2400	25,600	25,600			242,660	245,740	1.3%	3,080	0	0			268,260	271,340	1.1%	3,080
2410	25,600	25,600			113,410	113,730	0.3%	320	0	0			139,010	139,330	0.2%	320
2420	25,600	25,600			160,300	161,880	1.0%	1,580	0	0			185,900	187,480	0.8%	1,580
2440	72,000	72,000			78,270	78,450	0.2%	180	0	0			150,270	150,450	0.1%	180
2450	16,240	16,240			167,410	166,600	-0.5%	-810	0	0			183,650	182,840	-0.4%	-810
2451	16,240	16,240			167,130	167,020	-0.1%	-110	0	0			183,370	183,260	-0.1%	-110
2460	25,600	25,600			195,190	195,780	0.3%	590	0	0			220,790	221,380	0.3%	590
2470	25,600	25,600			0	0			0	0			25,600	25,600		
2480	25,600	25,600			224,210	226,750	1.1%	2,540	0	0			249,810	252,350	1.0%	2,540
2500	25,600	25,600			255,940	266,760	4.2%	10,820	0	0			281,540	292,360	3.8%	10,820
2510	25,600	25,600			138,150	141,560	2.5%	3,410	0	0			163,750	167,160	2.1%	3,410
2520	25,600	25,600			306,660	310,760	1.3%	4,100	0	0			332,260	336,360	1.2%	4,100
2530	25,600	25,600			149,210	148,130	-0.7%	-1,080	0	0			174,810	173,730	-0.6%	-1,080
2540	25,600	25,600			114,920	115,610	0.6%	690	0	0			140,520	141,210	0.5%	690
2550	43,000	43,000			92,860	97,920	5.4%	5,060	0	0			135,860	140,920	3.7%	5,060
2570	25,600	25,600			0	0			0	0			25,600	25,600		
2580	25,600	25,600			83,830	85,660	2.2%	1,830	0	0			109,430	111,260	1.7%	1,830
2600	25,600	25,600			0	0			0	0			25,600	25,600		
2610	16,180	16,180			59,430	58,880	-0.9%	-550	0	0			75,610	75,060	-0.7%	-550
2611	25,600	25,600			143,280	143,370	0.1%	90	0	0			168,880	168,970	0.1%	90
2620	16,180	16,180			325,430	329,820	1.3%	4,390	0	0			341,610	346,000	1.3%	4,390
2630	25,600	25,600			137,240	138,570	1.0%	1,330	0	0			162,840	164,170	0.8%	1,330
2650	56,620	56,620			94,800	94,820		20	0	0			151,420	151,440		20



Compare Assessments By Roll

Assessment for Entire Municipality

Roll	Land				Improvement				Total				Grand Total			
	2017	2018	% Diff	\$ Diff	2017	2018	% Diff	\$ Diff	2017	2018	% Diff	\$ Diff	2017	2018	% Diff	\$ Diff
2660	16,180	16,180			64,250	90,050	40.2%	25,800	0	0			80,430	106,230	32.1%	25,800
2670	16,180	16,180			0	0			0	0			16,180	16,180		
2680	25,600	25,600			90,480	96,690	6.9%	6,210	0	0			116,080	122,290	5.3%	6,210
2701	25,600	25,600			0	0			0	0			25,600	25,600		
2710	25,600	25,600			0	0			0	0			25,600	25,600		
2720	19,200	19,200			0	0			0	0			19,200	19,200		
2730	25,600	25,600			196,250	197,080	0.4%	830	0	0			221,850	222,680	0.4%	830
2740	25,600	25,600			95,100	97,440	2.5%	2,340	0	0			120,700	123,040	1.9%	2,340
2750	25,600	25,600			70,700	65,260	-7.7%	-5,440	0	0			96,300	90,860	-5.6%	-5,440
2760	25,600	25,600			231,560	232,050	0.2%	490	0	0			257,160	257,650	0.2%	490
2770	25,600	25,600			0	0			0	0			25,600	25,600		
2780	16,180	16,180			21,020	21,540	2.5%	520	0	0			37,200	37,720	1.4%	520
2781	16,180	16,180			289,670	296,810	2.5%	7,140	0	0			305,850	312,990	2.3%	7,140
2800	25,600	25,600			0	0			0	0			25,600	25,600		
2801	25,600	25,600			0	0			0	0			25,600	25,600		
2810	8,320	8,320			13,240	13,740	3.8%	500	0	0			21,560	22,060	2.3%	500
2820	16,180	16,180			130,540	131,760	0.9%	1,220	0	0			146,720	147,940	0.8%	1,220
2840	63,610	63,610			157,550	159,120	1.0%	1,570	0	0			221,160	222,730	0.7%	1,570
2870	25,600	25,600			0	0			0	0			25,600	25,600		
2880	25,600	25,600			0	0			0	0			25,600	25,600		
2890	13,170	13,170			289,730	295,480	2.0%	5,750	0	0			302,900	308,650	1.9%	5,750
2910	21,860	21,860			0	0			0	0			21,860	21,860		
2911	9,800	9,800			32,830	32,520	-0.9%	-310	0	0			42,630	42,320	-0.7%	-310
2920	25,600	25,600			0	0			0	0			25,600	25,600		
2931	25,600	25,600			0	0			0	0			25,600	25,600		
2940	16,100	16,100			0	0			0	0			16,100	16,100		
2950	25,600	25,600			1,873,000	1,885,380	0.7%	12,380	0	0			1,898,600	1,910,980	0.7%	12,380
2960	43,000	43,000			0	0			0	0			43,000	43,000		
2961	0	0			1,205,900	1,184,210	-1.8%	-21,690	0	0			1,205,900	1,184,210	-1.8%	-21,690
2980	13,260	13,260			33,790	33,550	-0.7%	-240	0	0			47,050	46,810	-0.5%	-240
2981	15,810	15,810			0	0			0	0			15,810	15,810		
2982	8,320	8,320			0	0			0	0			8,320	8,320		
2990	16,100	16,100			68,890	69,040	0.2%	150	0	0			84,990	85,140	0.2%	150
3010	43,000	43,000			8,070	6,690	-17.1%	-1,380	0	0			51,070	49,690	-2.7%	-1,380
3040	43,000	43,000			70,570	72,310	2.5%	1,740	0	0			113,570	115,310	1.5%	1,740
3050	43,000	43,000			373,200	376,120	0.8%	2,920	0	0			416,200	419,120	0.7%	2,920
3070	12,800	12,800			0	0			0	0			12,800	12,800		
3080	25,600	25,600			100,460	48,400	-51.8%	-52,060	0	0			126,060	74,000	-41.3%	-52,060
3100	77,650	77,650			168,780	181,950	7.8%	13,170	0	0			246,430	259,600	5.3%	13,170
3110	25,600	25,600			100,780	100,920	0.1%	140	0	0			126,380	126,520	0.1%	140
3210	25,600	25,600			47,580	47,120	-1.0%	-460	0	0			73,180	72,720	-0.6%	-460



Compare Assessments By Roll

Assessment for Entire Municipality

Roll	Land				Improvement				Total				Grand Total			
	2017	2018	% Diff	\$ Diff	2017	2018	% Diff	\$ Diff	2017	2018	% Diff	\$ Diff	2017	2018	% Diff	\$ Diff
3220	25,600	25,600			215,390	218,270	1.3%	2,880	0	0			240,990	243,870	1.2%	2,880
3230	42,860	42,860			445,070	466,750	4.9%	21,680	0	0			487,930	509,610	4.4%	21,680
3250	25,600	25,600			234,130	236,640	1.1%	2,510	0	0			259,730	262,240	1.0%	2,510
3260	25,600	25,600			0	0			0	0			25,600	25,600		
3270	25,600	25,600			0	0			0	0			25,600	25,600		
3280	25,600	25,600			0	0			0	0			25,600	25,600		
3310	43,000	43,000			0	0			0	0			43,000	43,000		
3330	56,620	56,620			0	0			0	0			56,620	56,620		
3340	25,600	25,600			229,280	230,990	0.7%	1,710	0	0			254,880	256,590	0.7%	1,710
3370	43,000	43,000			0	0			0	0			43,000	43,000		
3400	16,240	16,240			0	0			0	0			16,240	16,240		
3401	25,600	25,600			0	0			0	0			25,600	25,600		
3410	25,600	25,600			151,690	153,700	1.3%	2,010	0	0			177,290	179,300	1.1%	2,010
3420	25,600	25,600			0	0			0	0			25,600	25,600		
3450	56,620	56,620			106,920	107,770	0.8%	850	0	0			163,540	164,390	0.5%	850
3480	25,600	25,600			187,960	187,830	-0.1%	-130	0	0			213,560	213,430	-0.1%	-130
3490	25,600	25,600			47,010	46,150	-1.8%	-860	0	0			72,610	71,750	-1.2%	-860
3510	25,600	25,600			95,060	97,400	2.5%	2,340	0	0			120,660	123,000	1.9%	2,340
3520	25,600	25,600			0	0			0	0			25,600	25,600		
3540	25,600	25,600			125,610	126,630	0.8%	1,020	0	0			151,210	152,230	0.7%	1,020
3541	25,600	25,600			194,430	196,620	1.1%	2,190	0	0			220,030	222,220	1.0%	2,190
3550	16,180	16,180			61,920	62,060	0.2%	140	0	0			78,100	78,240	0.2%	140
3551	25,600	25,600			0	0			0	0			25,600	25,600		
3560	16,180	16,180			64,240	64,680	0.7%	440	0	0			80,420	80,860	0.5%	440
3570	25,600	25,600			0	0			0	0			25,600	25,600		
3580	25,600	25,600			0	0			0	0			25,600	25,600		
3610	22,830	22,830			143,240	142,670	-0.4%	-570	0	0			166,070	165,500	-0.3%	-570
3620	22,830	22,830			72,120	81,420	12.9%	9,300	0	0			94,950	104,250	9.8%	9,300
3630	21,540	21,540			270,550	274,020	1.3%	3,470	0	0			292,090	295,560	1.2%	3,470
3640	21,540	21,540			0	0			0	0			21,540	21,540		
3641	6,720	6,720			0	0			0	0			6,720	6,720		
4100	63,330	63,330			0	0			0	0			63,330	63,330		
4401	1,950	0	-	-1,950	18,810	0	-	-18,810	0	0			20,760	0	-	-20,760
4500	25,600	25,600			0	8,790		8,790	0	0			25,600	34,390	34.3%	8,790
4600	25,600	25,600			43,490	41,100	-5.5%	-2,390	0	0			69,090	66,700	-3.5%	-2,390
4700	25,600	25,600			0	0			0	0			25,600	25,600		
4800	25,600	25,600			127,780	128,940	0.9%	1,160	0	0			153,380	154,540	0.8%	1,160
5010	16,060	16,060			0	0			0	0			16,060	16,060		
5100	56,620	56,620			18,420	18,680	1.4%	260	0	0			75,040	75,300	0.3%	260
5200	25,600	25,600			64,630	64,180	-0.7%	-450	0	0			90,230	89,780	-0.5%	-450
5300	25,600	25,600			25,480	25,830	1.4%	350	0	0			51,080	51,430	0.7%	350



Compare Assessments By Roll

Assessment for Entire Municipality

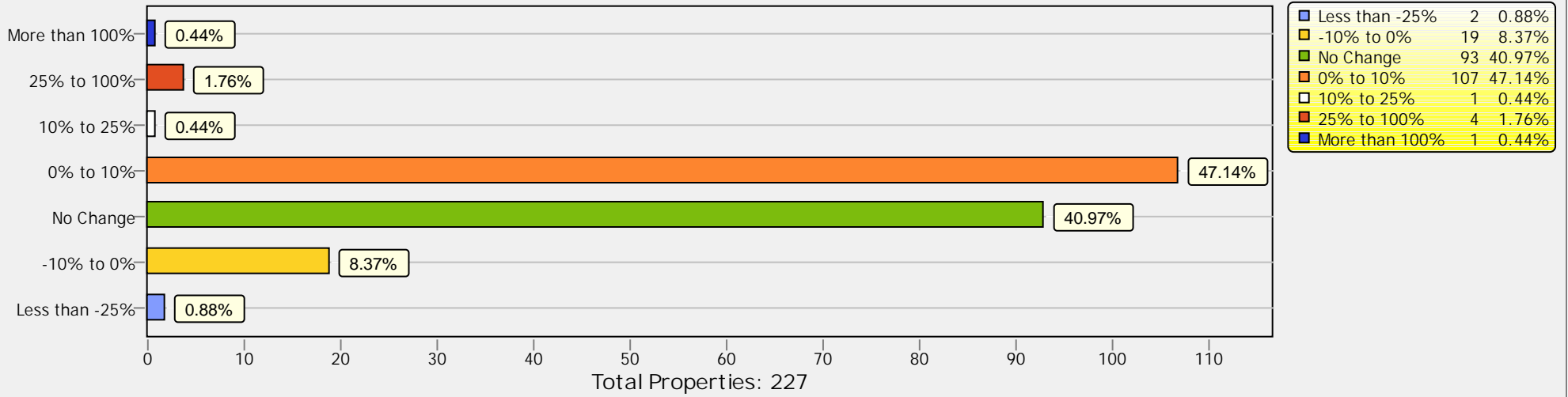
Roll	----- Land -----				----- Improvement -----				----- Total -----				----- Grand Total -----			
	2017	2018	% Diff	\$ Diff	2017	2018	% Diff	\$ Diff	2017	2018	% Diff	\$ Diff	2017	2018	% Diff	\$ Diff
5500	19,200	19,200			0	0			0	0			19,200	19,200		
5600	12,800	12,800			0	0			0	0			12,800	12,800		
5900	16,060	16,060			100,850	103,040	2.2%	2,190	0	0			116,910	119,100	1.9%	2,190
8100	25,600	25,600			206,940	209,280	1.1%	2,340	0	0			232,540	234,880	1.0%	2,340
8200	25,600	25,600			0	0			0	0			25,600	25,600		
8300	63,610	63,610			108,710	111,390	2.5%	2,680	0	0			172,320	175,000	1.6%	2,680
8700	12,800	12,800			0	0			0	0			12,800	12,800		
8800	12,800	12,800			0	0			0	0			12,800	12,800		
9100	25,600	25,600			170,780	177,300	3.8%	6,520	0	0			196,380	202,900	3.3%	6,520
9200	25,600	25,600			182,360	170,830	-6.3%	-11,530	0	0			207,960	196,430	-5.5%	-11,530
9300	25,600	25,600			147,370	148,470	0.7%	1,100	0	0			172,970	174,070	0.6%	1,100
9400	25,600	25,600			0	0			0	0			25,600	25,600		
9500	43,000	43,000			69,190	69,320	0.2%	130	0	0			112,190	112,320	0.1%	130
9700	25,600	25,600			17,700	22,780	28.7%	5,080	0	0			43,300	48,380	11.7%	5,080
9800	25,600	25,600			104,410	104,460		50	0	0			130,010	130,060		50
9991	63,750	63,750			379,390	382,670	0.9%	3,280	0	0			443,140	446,420	0.7%	3,280
9992	52,990	52,990			0	0			0	0			52,990	52,990		
9993	18,130	18,130			283,900	286,860	1.0%	2,960	0	0			302,030	304,990	1.0%	2,960
9994	12,200	12,200			0	0			0	0			12,200	12,200		
9995	43,310	43,310			0	0			0	0			43,310	43,310		
9996	1,840	1,840			0	0			0	0			1,840	1,840		
9998	55,460	55,460			195,550	216,480	10.7%	20,930	0	0			251,010	271,940	8.3%	20,930



Compare Assessments By Roll

Assessment for Entire Municipality
Years from 2017 to 2018

Compare By Percent Change



Compare By Dollar Change

